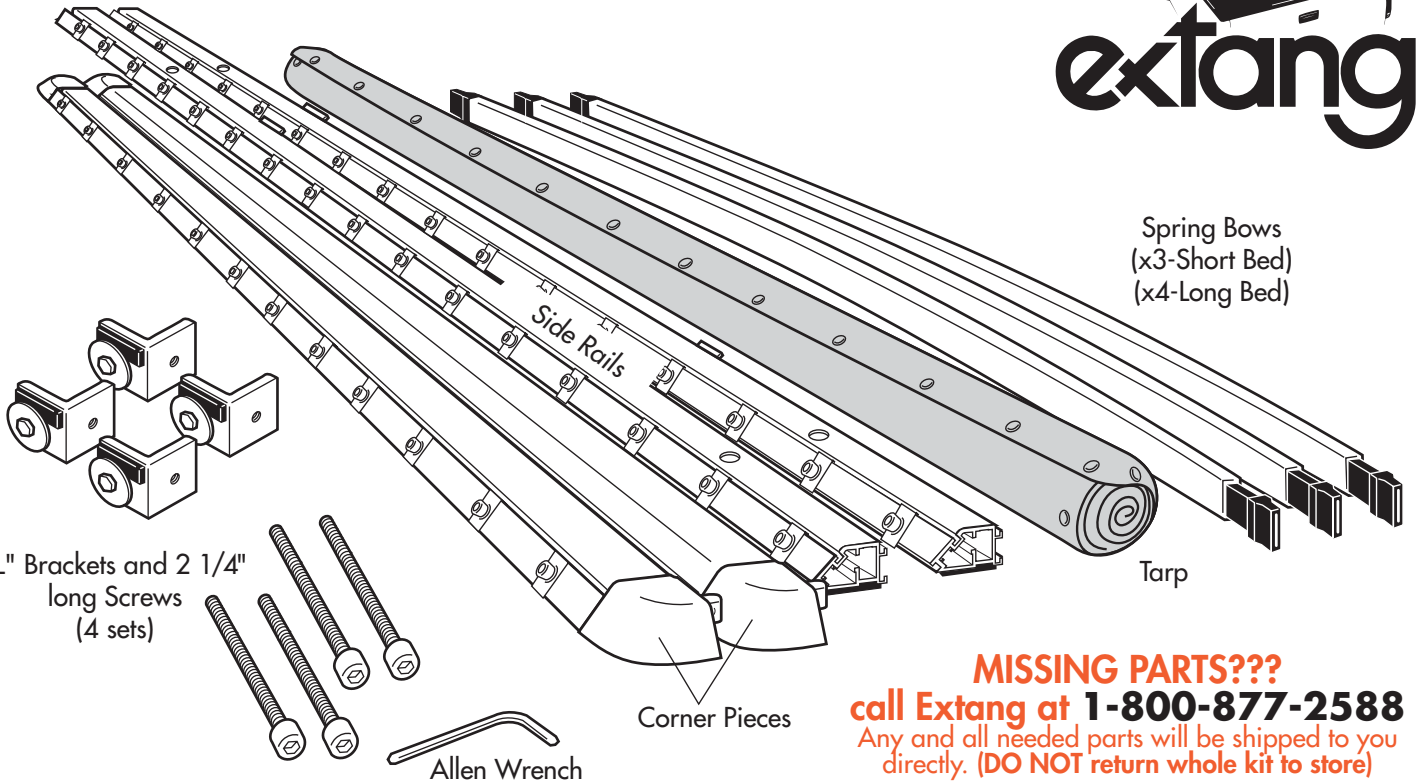


# INSTALLATION SHEET-GM/Chevy Composite Box

Exclusively for **CLASSIC PLATINUM**

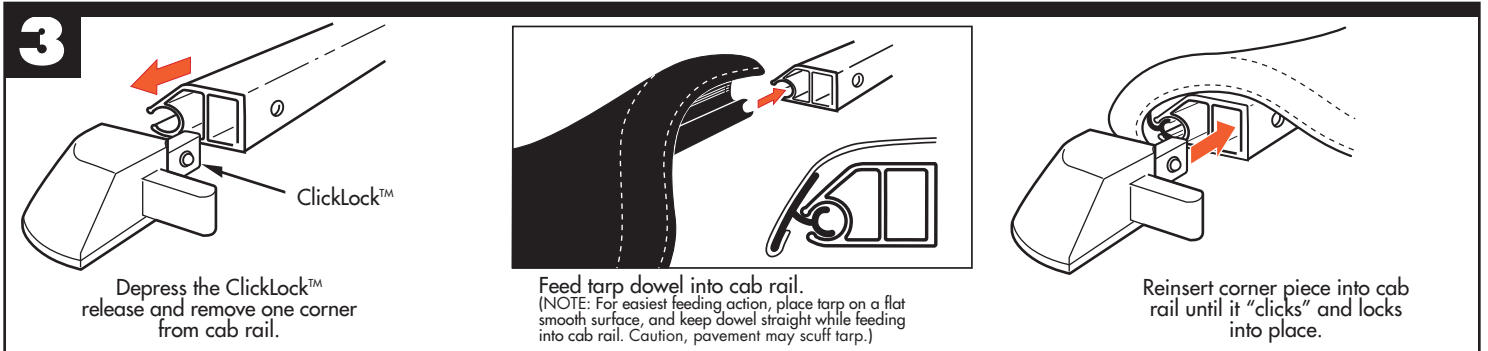


Spring Bows  
(x3-Short Bed)  
(x4-Long Bed)



**MISSING PARTS???**  
call Extang at **1-800-877-2588**  
Any and all needed parts will be shipped to you directly. (DO NOT return whole kit to store)

PARTS INCLUDED IN YOUR KIT. You may want to lay them out in this manner for accessibility.



**extang**  
Stands for Quality

Extang Corporation  
1901 E. Ellsworth Rd.  
Ann Arbor, MI 48108  
734 677-0444, Fax: 734 677-8409

Visit us at:  
**www.extang.com**

Item No. 0009-0604 Printed in U.S.A.

**4**

Secure a 2 1/4" screw into the "L" bracket and use the screw as a handle to insert the disk of the "L" bracket into the keyhole slot inside the truck stake pocket (x4).

Pull up on the screw to secure the "L" bracket **FIRMLY** into the keyhole slot and then remove the screw leaving the "L" bracket in place.

**5**

Insert two 2 1/4" screws into the holes of a side rail.

Line up the screws with holes in the "L" brackets in place. Carefully twist screws into brackets and lightly tighten. Do both side rails before proceeding to Step 6.

**6**

Insert the cab rail into the front of the two side rails and the tail rails into the back of both side rails.

**7**

Tighten each screw until rail is secure. **DO NOT OVER TIGHTEN! THIS WILL DAMAGE THE SIDE RAIL.**

**8**

Insert bow onto top or bottom peg, (Top peg for performance, Bottom for good looks.)

Upper Peg or Lower Peg

Ends are spring loaded for easy installation. Push and hold on spring end and let the other end slide on with the spring action.

SPECIAL FEATURE: Two pegs offer two height adjustments. Note: Bow End does not fit between pegs.

Do Not Place Between the Pegs

**9**

**For Classic Platinum**

Attach tarp by starting at the corners, and snap in place.

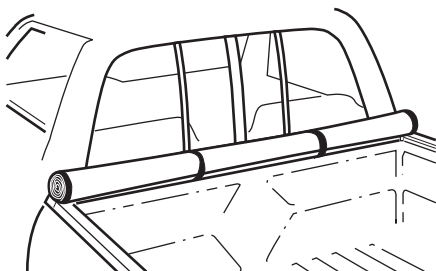
**Start at Corners**

**SPECIAL FEATURE Weather-adjustable Snaps**

Studs Down → Slides Off → Rotate 180° → Studs Up

**SUMMER SETTING**  
Takes up slack in tarp caused by warm weather.

**WINTER SETTING**  
Allows more slack in tarp for cold temperatures.



**EASY USE OF TRUCK BED**  
Tarp may be rolled up and secured with Velcro® for bulk hauling

To Keep Your **CLASSIC PLATINUM**

tonno looking great! Clean with Mild Soap and Water **ONLY** or Use EXTANG's **TONNO TONIC™**—specially formulated for vinyl tonno covers. It cleans, protects, and beautifies in a simple one-step application.

**Use of vinyl conditioners (such as Armor All) will void your tonno warranty!**



Extang Corporation, 1901 E. Ellsworth Rd., Ann Arbor, MI 48108, 734 677-0444, Fax: 734 677-8409, Visit us at: [www.extang.com](http://www.extang.com)